

Domestic Abuse



**The first thing to remember is:
It is not your fault.**

**No one deserves to be abused,
assaulted, or humiliated.**

What is Domestic Abuse?

Domestic abuse is described as any incident of threatening behaviour, violence or abuse (psychological, physical, sexual, financial or emotional) between adults, aged 16 and over, who are or have been intimate partners or family members, regardless of gender and sexuality.

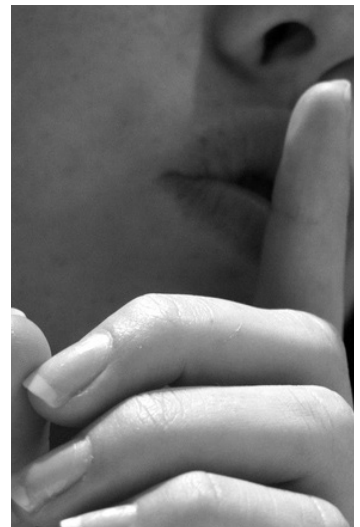
The abuse could include but is not limited to:

- Physiological
- Physical
- Sexual
- Financial
- Emotional
- Controlling behaviour
- Coercive behaviour (the use of force or intimidation to get you to do something you don't want to)
- Forced marriage
- Honour based violence

What we understand

It can be extremely difficult for someone to leave an abusive partner. You may:

- Not have access to money
- Not have anywhere to go
- Not know who to turn to for help
- Be emotionally dependent on your partner
- Be financially dependent on your partner
- Be isolated
- Have low self esteem
- Feel ashamed
- Fear what your partner will do if you leave
- Believe staying with the abuser is better for the children



What we understand

With this in mind, you may also remember the good times and hope the bad times pass and things get better.

People from different cultures can find it particularly difficult to leave an abusive partner as they believe this could bring shame on both themselves and their families.

What we will do

As a landlord, Radian has policies and procedures in place to deal with domestic abuse, and adult and child safeguarding within our properties. The Radian policy states:

“We condemn all incidents of domestic abuse and violence. We are committed to a fast and supportive response to tenants, leaseholders and members of their household.

We will adopt a victim-centred approach in all cases of domestic abuse and violence. We will consider the safety of the individual of domestic abuse or violence and will deal promptly with any damage caused to our properties.”

Radian has a Community Safety team who will help any of our residents who tell us they have been subjected to domestic abuse. If appropriate we can help the victim leave, if that’s what they want. Alternatively, we will provide additional security and/or repairs to the home. We will treat all information provided to us with the strictest confidence.



Useful contacts

If you feel you need help, or if you are not yet ready to seek help and just want some more information about the options available to you, here are some numbers and websites you may find useful:

Women

Women's Aid

0808 2000 247 / www.womensaid.org.uk

The National Centre for Domestic Violence

0800 970 2070 / www.ncdv.org.uk

Refuge

0808 2000 247 / www.refuge.org.uk

Men

Mankind

01823 334244 / new.mankind.org.uk

Men's Advice Line

0808 801 0327 / www.mensadvice.org.uk

More contacts

Radian

0300 123 1567 / CommunitySafety_All@radian.co.uk

Emergency Services

999

Forced Marriage Unit

020 7008 0151

Broken Rainbow

Help for lesbian, gay, bisexual and transgender people experiencing domestic abuse.

08452 60 44 60

Citizens Advice Bureau

0870 121 2134

